

Hello music friends :)

Please click the link below and keep up the practice on note reading.

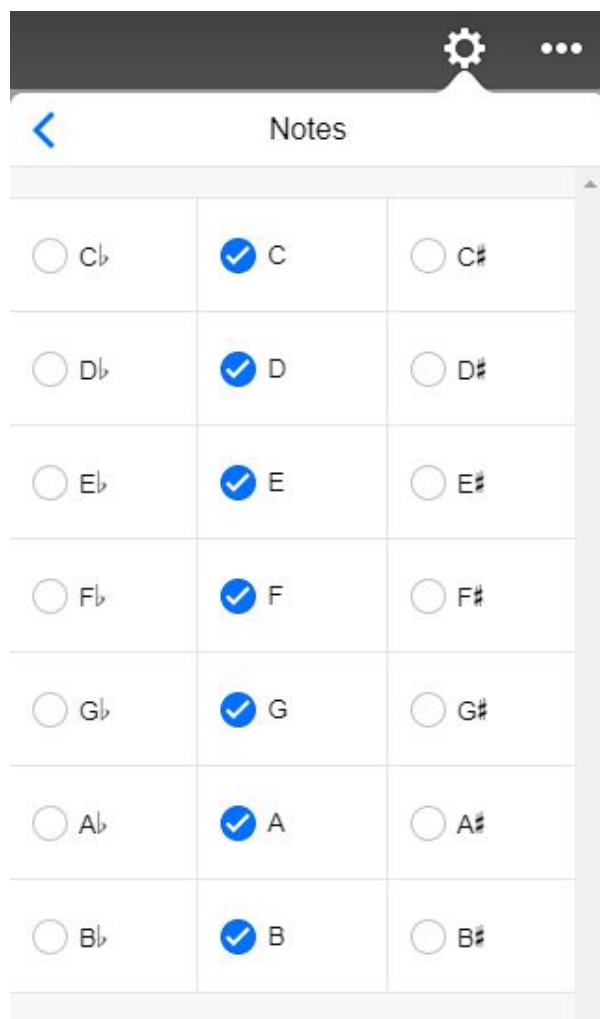
<https://www.musictheory.net/exercises/note>

Click the gear at the top right of the page.

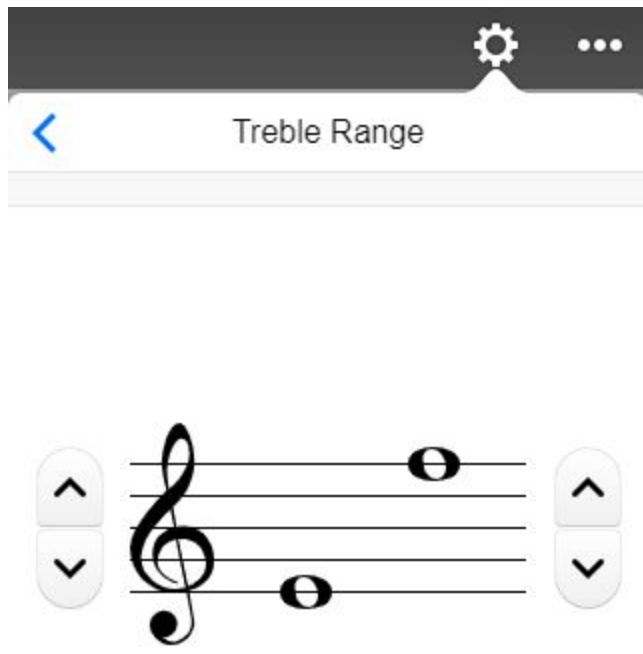
Turn on “note filter.”



Next, click “notes” underneath. Turn off all sharps and all flats. It should match with the image below.



Next, go back to the gear and click “treble range.” Set the bottom pitch to an “E” and the top pitch to an “F.” It should match the image below.



You're good to go! Click back on to the main page and practice your note reading. Keep track of your score at the top and try to keep over 80%. Use your hand staff and your rhymes to help you out. Good luck :)